

# TLINE LED

SURFACE / SUSPENDED  
OPAL / OPAL + LOUVER (UGR<19)



LED			IP40				5 years warranty	60,000 hrs L80/B10 Ta=25°C	220-240V 50-60Hz		CE
-----	--	--	------	--	--	--	------------------	----------------------------------	---------------------	--	----

## TLine LED

### TLine LED Louver + Opal

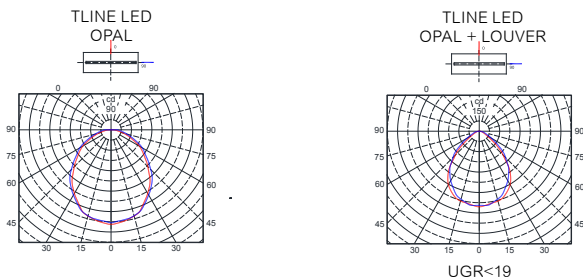
Surface / Suspended  
Can be installed in continuous line

**UGR<19**

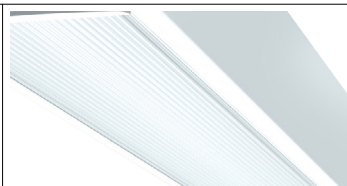
### TLine LED Opal

Surface / Suspended  
Can be installed in continuous line

<b>LIGHT OUTPUT</b>	up to 4100 lm	up to 4200 lm
<b>EFFICIENCY</b>	up to 106 lm/W	up to 106 lm/W
<b>WIRING</b>	ECG, on request: DALI, 1-10V On request: Emergency kit (1h, 3h)	ECG, on request: DALI, 1-10V On request: Emergency kit (1h, 3h)
<b>CCT</b>	3000 - 4000K	3000 - 4000K
<b>CRI</b>	≥ 80 Ra	≥ 80 Ra
<b>MATERIALS</b>		
> Housing	Sheet steel	Sheet steel
> Louver	High-purity polished anodised aluminium, double parabolic; on request: mat	N/A
> Diffuser	Opal PMMA Mat Pattern	Opal Polycarbonate
> End caps	ABS	ABS
<b>LIGHT DISTRIBUTION</b>	Direct	Direct
<b>SURFACE FINISH</b>	White color (RAL9003); other colors on request	White color (RAL9003); other colors on request
<b>ACCESSORIES</b>	Single suspenders Additional Components for continuous in-Line fixture	Single suspenders Additional Components for continuous in-Line fixture



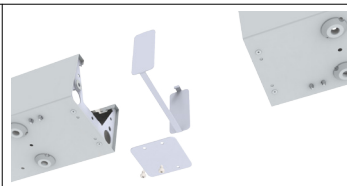
Opal PMMA +High-purity polished anodised aluminium, double parabolic (UGR<19)



Opal Polycarbonate (PC)

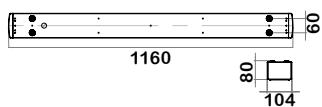


High-quality elegant end caps, made of ABS

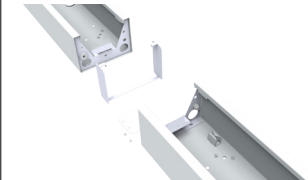
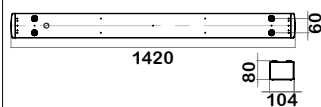


Details and components for installed in continuous line

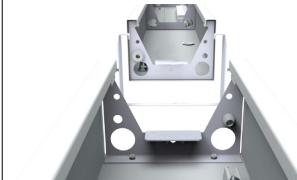
drawing #1



drawing #2



Details and components for installed in continuous line



Details and components for installed in continuous line

Net lumen output	CCT	Power	Wiring	Dimensions	Weight	ACS	Purchase code	
(lm)	(K)	(W)		(mm)	(kg)	#		
2100	3000	21	ECG	drawing #1	3.46	1,3	TLineS/P-120-21-2100/4.3/IP20DBO3W	
2200	4000	21	ECG	drawing #1	3.46	1,3	TLineS/P-120-21-2200/4.4/IP20DBO3W	
3500	3000	34	ECG	drawing #1	3.46	1,3	TLineS/P-120-34-3500/4.3/IP20DBO3W	
3600	4000	34	ECG	drawing #1	3.46	1,3	TLineS/P-120-34-3600/4.4/IP20DBO3W	
2600	3000	25	ECG	drawing #2	4.72	1,2	TLineS/P-150-25-2600/4.3/IP20DBO3W	
2800	4000	25	ECG	drawing #2	4.72	1,2	TLineS/P-150-25-2800/4.4/IP20DBO3W	
3900	3000	40	ECG	drawing #2	4.72	1,2	TLineS/P-150-40-3900/4.3/IP20DBO3W	
4100	4000	40	ECG	drawing #2	4.72	1,2	TLineS/P-150-40-4100/4.4/IP20DBO3W	
TLine Surface-Suspended 1160mm , Bright aluminum reflector+Opal PMMA, cabled for LED tubes (drawing #1)							1,3	TLineS/P-120_/_/IP20DBO3W *
TLine Surface-Pendant 1420mm , Bright aluminum reflector+Opal PMMA, cabled for LED tubes (drawing #2)							1,2	TLineS/P-150_/_/IP20DBO3W *
#	Accessories (ACS)						Purchase code	
1	Additional Components for continuous in-Line TLineS/P-120						AC/TLineS/mid-120	
2	Additional Components for continuous in-Line TLineS/P-150						AC/TLineS/mid-150	
3	Single suspenders 1.5m (2pcs per fitting)						ACSus 1/1.5	

**TLINE LED**  
OPAL + LOUVER  
(UGR<19)



Net lumen output	CCT	Power	Wiring	Dimensions	Weight	ACS	Purchase code	
(lm)	(K)	(W)		(mm)	(kg)	#		
2100	3000	21	ECG	drawing #1	3.46	1,3	TLineS/P-120-21-2100/4.3/IP40O2W	
2200	4000	21	ECG	drawing #1	3.46	1,3	TLineS/P-120-21-2200/4.4/IP40O2W	
3500	3000	34	ECG	drawing #1	3.46	1,3	TLineS/P-120-34-3500/4.3/IP40O2W	
3600	4000	34	ECG	drawing #1	3.46	1,3	TLineS/P-120-34-3600/4.4/IP40O2W	
2600	3000	25	ECG	drawing #2	4.72	1,2	TLineS/P-150-25-2600/4.3/IP40O2W	
2800	4000	25	ECG	drawing #2	4.72	1,2	TLineS/P-150-25-2800/4.4/IP40O2W	
4000	3000	40	ECG	drawing #2	4.72	1,2	TLineS/P-150-40-4000/4.3/IP40O2W	
4200	4000	40	ECG	drawing #2	4.72	1,2	TLineS/P-150-40-4200/4.4/IP40O2W	
TLine Surface-Suspended 1160mm , opal diffuser cabled for LED tubes, cabled for LED tubes, (drawing #1)							1,3	TLineS/P-120_/_/IP40O2W *
line Surface-Pendant 1420mm , opal diffuser cabled for LED tubes, cabled for LED tubes, (drawing #2)							1,2	TLineS/P-150_/_/IP40O2W *
#	Accessories (ACS)						Purchase code	
1	Additional Components for continuous in-Line TLineS/P-120						AC/TLineS/mid-120	
2	Additional Components for continuous in-Line TLineS/P-150						AC/TLineS/mid-150	
3	Single suspenders 1.5m (2pcs per fitting)						ACSus 1/1.5	

**TLINE LED**  
OPAL

